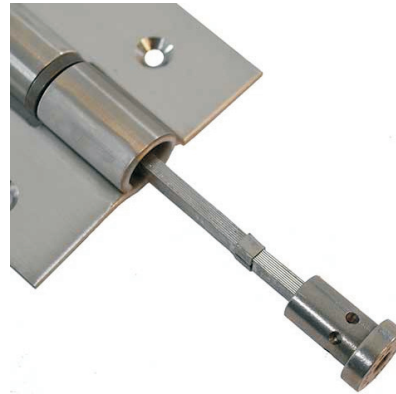
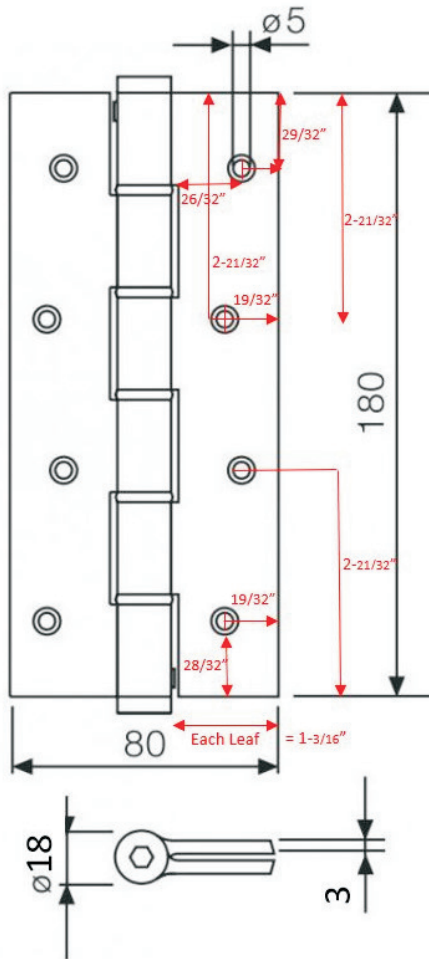


316 Stainless Steel Heavy Duty Self-Closing Hinge Adjustable Laminar Torsion Spring



Key Points

- * Resistant to extreme climatic conditions (Cold & Humidity)
- * Maximum resistance to bending
- * Variable Closing speeds
- * Quick and simple installation
- * No Periodical greasing required
- * 2 Year guarantee
- * Ideal for costal environments



Material: 316 Stainless Steel
Mechanism: Laminar Torsion Spring
Finishes Available: Brushed Finish
Set Includes: 316 #10 x 1-1/2" Fasteners

Dimensions:

Overall: 3-1/8" x 7" x .130"
 Leaf: 1-3/16" leaf width
 Barrel: .71" diameter

Item#: SA180S3

360yardware

life's too short for crummy hardware

www.360yardware.com

Phone: 866.923.9273

Email: sales@360yardware.com

Description: 3-1/8" x 7" Self-Closing Hinge

Material/Finish: 316 Stainless Steel